

PENTAX™

PENTAX REMOTE Assistant™ For Macintosh

Operating manual

Thank you for downloading the PENTAX REMOTE Assistant. This document is the Operating Manual for the PENTAX REMOTE Assistant. In order to get the most out of the functions of your PENTAX REMOTE Assistant, be sure to thoroughly read this manual before using it. Read it together with the Operating manuals for your camera **istD* and the PENTAX PHOTO Browser/PENTAX PHOTO Laboratory. After reading the Operating manual, be sure to keep it in a safe place; it will come in handy when you want to learn more about the various functions.

Regarding trademarks




CompactFlash and CF are trademarks of SanDisk Corporation.

PENTAX is a trademark of PENTAX Corporation.

PENTAX REMOTE Assistant, PENTAX PHOTO Browser, and PENTAX PHOTO Laboratory are trademarks of PENTAX Corporation.

All other brands or product names are trademarks or registered trademarks of their respective companies.

- Symbols used in this manual have the following meanings:

	Gives page numbers explaining related operations.
	Gives information that is useful to know.
	Gives cautions and notes about the operation.

The screen pictures shown in this manual may differ depending on the type of computer used.

CONTENTS

What you can do with the PENTAX REMOTE Assistant .. 3

The System Environment.....4

Starting up the PENTAX REMOTE Assistant 5

Starting up from the PENTAX PHOTO Browser5

Starting up from the program icon.....6

Closing the PENTAX REMOTE Assistant.....6

The Structure of the PENTAX REMOTE Assistant Window 7

Viewfinder Indicators/ Status Bar/ Release Button8

Menu Bar.....8

Tool Bar.....10

Basic Operation for Taking Pictures (Quick Start) 12

Getting Ready to Shoot.....12

Making Settings on the Camera Itself13

Making Environmental Settings in PENTAX REMOTE Assistant ([File] Menu)14

Taking Pictures18

Settings for Shooting ([View] menu/ [Operation] menu) 20

[Shooting Conditions] Window ([View] menu).....20

Camera Settings Window ([View] menu)22

Manual White Balance Metering ([Operation] menu).....23

Remote Interval/Bracket shoot ([Operation] Menu) 26

Interval/Timer Shooting ([Operation] Menu).....26

Expanded Bracket Shooting ([Operation] Menu)28

Camera Menu Screen ([Operation] Menu) 30

Camera Menu Screen ([Operation] Menu).....30

Custom Function ([Operation] Menu).....32

Working with Related Software 38

PENTAX PHOTO Browser (Image Management/Reviewing).....38

PENTAX PHOTO Laboratory (RAW Data Expansion/Conversion)38

Glossary..... 39

What you can do with the PENTAX REMOTE Assistant

The PENTAX REMOTE Assistant is software that allows you to operate/control your digital camera from your computer via a USB cable connection. You can control everything from your computer from making settings to taking pictures all while checking it on your computer. And the pictures will be saved on your computer.

For example, if you were using identical lighting conditions to shoot a large number of product photos, you could set the camera on a tripod and simply change the products and shoot them one after another, without ever touching the camera. The photos are displayed on the screen, so you can check and then save them.

If you use the Assistant in conjunction with the PENTAX PHOTO Browser and/or the PENTAX PHOTO Laboratory, you can do everything from your computer, from making camera settings and taking photos to managing images—all in one continuous flow.

If you use it on your laptop, you can take it outdoors, giving yourself all the more freedom for taking pictures and managing them.

What's more, when you use the PENTAX REMOTE Assistant, the following two Optional functions can be used in addition to your camera's normal shooting functions.

Interval/Timer Shooting

You can take pictures with a lot of flexibility when you use the Interval and Timer settings.

Expanded bracket shooting

The refined settings in Auto-Bracketing make shooting a snap.

You can also start up the PENTAX PHOTO Browser, the PENTAX PHOTO Laboratory, or the PENTAX REMOTE Assistant individually.



- This manual explains how to make settings to your camera, take pictures, etc. with the PENTAX REMOTE Assistant. For more detailed information about your camera's settings, functions, how to view through the viewfinder display guide, etc., please refer to your camera's operating manual.
- For information on how to operate the PENTAX PHOTO Browser and/or the PENTAX PHOTO Laboratory, please see the PENTAX PHOTO Browser/PENTAX PHOTO Laboratory operating manual(s).
- We recommend using an AC adaptor when connecting your camera to a computer.

The System Environment

We recommend the following system environment when using the PENTAX REMOTE Assistant.

- OS: Mac OS 9.0 or high (CarbonLib 1.5 or later)
Mac OS X 10.1.3 or later
- CPU: Power PC G3 or later
- Memory: 256MB or more
- Monitor: 1024 × 768 in 24 bit full color
(approx. 16.77 million colors)
- Free Disk Space: 70MB or more
- The OS is pre-installed, and then the USB port must be standard equipment.



- In Mac OS 8.6, you cannot use PENTAX REMOTE Assistant.
- We recommend using an AC adaptor when connecting your camera to a computer.
- In order to use the PENTAX REMOTE Assistant, it is necessary to update your camera's firmware to version 1.11 or later.

Starting up the PENTAX REMOTE Assistant

Start up the PENTAX REMOTE Assistant. You can start it up by either launching it from the PENTAX PHOTO Browser or by starting it up from your computer independently.

Before starting the program, connect your camera and computer with the USB cable and turn the camera ON.

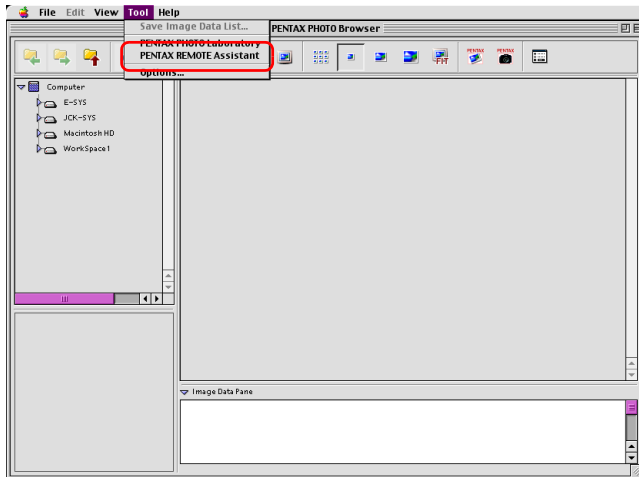


We recommend using an AC adaptor when connecting your camera to a computer.

Starting up from the PENTAX PHOTO Browser

- 1 In the PENTAX PHOTO Browser window, select [PENTAX REMOTE Assistant] from the Tool menu.

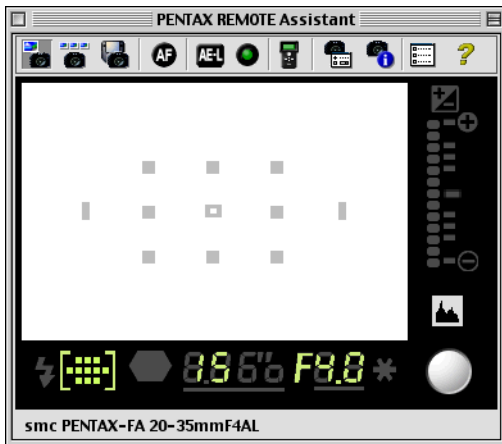
The PENTAX REMOTE Assistant will start up.



Starting up from the program icon

- 1 Double-click the [PENTAX Digital Camera Utility] on the hard disk.
- 2 Double-click the [PENTAX REMOTE Assistant] program icon.

The PENTAX REMOTE Assistant will start up. If your camera and computer are connected, the following [PENTAX REMOTE Assistant] screen will be displayed.



Closing the PENTAX REMOTE Assistant

- 1 Select [Quit] from the [File] menu.

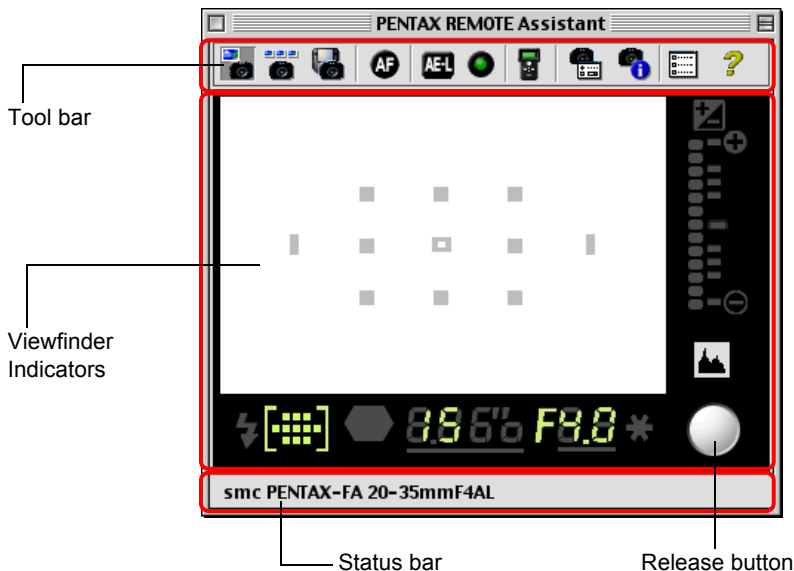
The PENTAX REMOTE Assistant finishes and the [PENTAX REMOTE Assistant] window closes.



For information about how to disconnect a camera, refer to P.15 of the PENTAX PHOTO Browser operating manual.

The Structure of the PENTAX REMOTE Assistant Window

If you start up the PENTAX REMOTE Assistant while your camera and computer are connected, the following [PENTAX REMOTE Assistant] window is displayed.



Viewfinder Indicators/ Status Bar/ Release Button

● Viewfinder Indicators

The viewfinder indicators that are displayed when viewing through the camera's viewfinder appear underneath the menu and tool bar.

☞ For detailed information about the viewfinder indicators, refer to your camera's operating manual, P.17 "Viewfinder Indications".



You cannot check the subject before shooting taking picture with the Viewfinder Indicators in the PENTAX REMOTE Assistant window. Carry out operations like checking the subject with the camera itself.

● Status Bar

The name of the lens currently being used is displayed on the status bar at the very bottom of the screen.

● Release Button

When you click the release button, the camera's shutter release button is operated and a photo is taken.



If you select the shutter release from the [Operation] menu, you cannot perform Consecutive Shooting or Bulb shooting.

Menu Bar

The menu bar has four pulldown menus, File, Operation, View, and Help. The contents of each menu are as follows.

File	Single shooting mode	Takes one photo at a time and saves it. ☞ P.14
	Buffer selection mode	After taking a number of photos, they are put together, allowing you to save or delete them. ☞ P.15
	Auto save mode	When photos are taken then are automatically saved in a set location. ☞ P.17
	Optional settings	Settings are made for things like the location and file names when using the Auto-Save mode or AF operation with Remote Release, etc. ☞ P.17
	Quit	Closes the PENTAX REMOTE Assistant. ☞ P.6

Operation	Shutter release	Presses the camera's shutter release button, taking a picture. ☞ P.19
	AF execution	Allows focusing (when the shutter release button is pressed halfway down or AF button is pressed) during Auto-focus. ☞ P.71, P.78 of operating manual for your camera.
	AE lock	Sets the exposure setting prior to taking the photograph ☞ P.69 of operating manual for your camera.
	Green Button	Presses the Green Button, to obtain the correct exposure. ☞ P.66 of operating manual for your camera.
	Measure manual white balance	Allows you to set white balance manually. ☞ P.23 ☞ P.142 of operating manual for your camera.
	Remote Interval/Bracket shoot	Displays the [Remote Interval/Bracket shoot] window for setting and shooting with Interval Shooting/Timer Shooting and extended bracketing shooting (high level Auto-Bracketing Shooting). ☞ P.26 ☞ P.82 of operating manual for your camera.
	Custom Function	Displays the [Custom Function] window for making custom function settings. You can save the settings and recall them. ☞ P.32 ☞ P.115, P.127 of operating manual for your camera.
	Camera menu screen window	Displays information about the settings menu for the camera. You can make changes while in this screen to the settings. ☞ P.30 ☞ P.112 - P.126 of operating manual for your camera.

View	Detailed viewfinder display	Displays detailed viewfinder indicators.
	Simple viewfinder display	Displays simplified viewfinder indicators.
	Line up window	Arranges and displays open [Shooting condition set window] and [Camera Setting window].
	Toolbars	Displays the tool bar under the menu.
	Status Bar	Displays the status bar at the bottom of the screen.
	[Shooting condition set window]	Displays [Shooting Condition set window]. ☞ P.20
	[Camera setting window]	Displays [Camera setting window] ☞ P.22

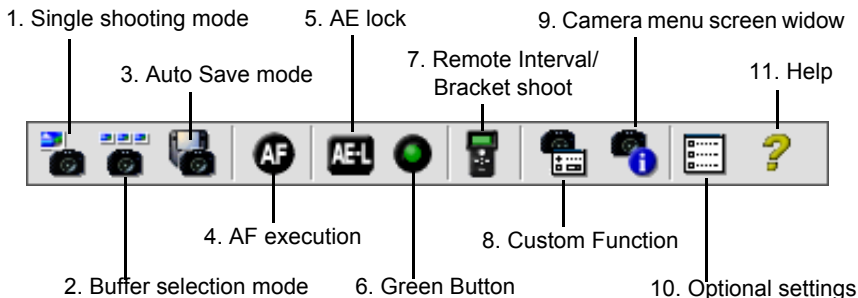
Help	Version	Displays version information.
------	---------	-------------------------------

Tool Bar

The tool bar is set up with buttons of frequently used functions (menu items). By just clicking one of the tool bar buttons, you can operate its corresponding function. Once you get used to it, you will find it easier to operate this way.



If you put the cursor over a tool bar button (item), the name of the item is displayed.



For information about each button on the tool bar, please refer to the “Menu Bar” (P.8).

	1. Single shooting mode	Same as the corresponding item in the [File] menu.
	2. Buffer selection mode	
	3. Auto Save mode	
	4. AF execution	Same as the corresponding item in the [Operation] menu.
	5. AE lock	
	6. Green Button	
	7. Remote Interval/ Bracket shoot	
	8. Custom Function	
	9. Camera menu screen widow	
	10. Optional settings	Same as the corresponding item in the File menu.
	11. Help	Same as PENTAX REMOTE Assistant Help in the [Help] menu.

Basic Operation for Taking Pictures (Quick Start)

With the PENTAX REMOTE Assistant you can operate your camera from making various settings for the shooting conditions to taking pictures (shutter release) by your computer. The basic operations for taking pictures are explained here.



For detailed information about your camera's functions, such as drive modes, image quality, focusing, exposure, the strobe, light metering method, etc., refer to operating manual for your camera.



- We recommend using an AC adaptor when connecting your camera to a computer.
- When your camera is connected to a computer via a USB cable, the Auto Power-off (Power saving function) does not work.

Getting Ready to Shoot

The only difference between using the PENTAX REMOTE Assistant for shooting and normal release shooting is connecting the camera to a computer. Bear the following points in mind while getting ready to take pictures. Refer to the PENTAX PHOTO Browser operating manual on P.13 for information about connecting your camera to a computer.

- **We recommend using an AC adaptor when connecting your camera to a computer.**
- **Decide where to place your camera based on the positions of the subject and your computer, and fix it in place using a tripod or the like.**

In addition to the positions of the camera and the subject, position the camera so the connection to the computer is easy to make and so it will be secure.

As it is not possible to check the composition of your subject in the PENTAX REMOTE Assistant window before shooting, make any adjustments while looking through the camera's viewfinder.

If you use a laptop computer, you will have a great deal more freedom in positioning, and being able to shoot outdoors.

- **Decide on where to save the data of the pictures you take.**

We recommend to decide where to save your picture data in advance so you won't forget afterwards. If you are taking a lot of pictures, check to make sure you will have enough space free where you wish to save them.

Making Settings on the Camera Itself

You can check your camera's current settings and make any changes needed in the [Shooting Condition set window] or the [Camera Setting window] with the PENTAX REMOTE Assistant.

However, it is not possible to check the positioning or size of your subject in the [PENTAX REMOTE Assistant] window. Make any adjustments by looking through the camera's viewfinder.

Also, as the following items cannot be set with the PENTAX REMOTE Assistant, make the settings on the camera itself. For detailed information about the settings and how to make them, please refer to your camera's operating manual.

- **Capture mode**

 P.59 of operating manual for your camera.

- **Metering mode (Metering Method)**

 P.57 of operating manual for your camera.

- **Focus mode**

 P.70 of operating manual for your camera.

- **Focus Point (Focus Point) Mode: (AUTO/SEL/)**

 P.74 of operating manual for your camera



For information about the [Shooting condition set window] and the [Camera setting window] of the PENTAX REMOTE Assistant, refer to the Settings for Shooting (View Menu) (P.20).

Making Environmental Settings in PENTAX REMOTE Assistant ([File] Menu)

The following three modes exist for taking and saving pictures with PENTAX REMOTE Assistant. Select the mode from the [File] menu or on the tool bar and then take a picture.

Single shooting mode

Takes one photo at a time and saves it.

Buffer selection mode

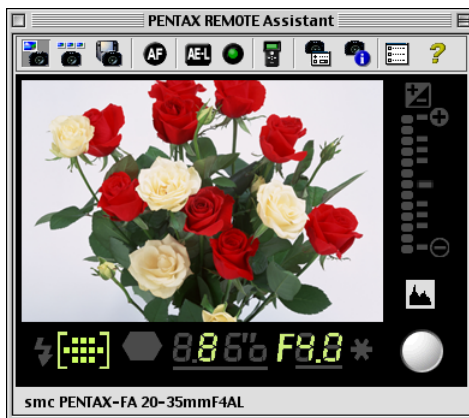
After taking a number of photos, they are put together for processing, such as saving or deleting them.

Auto save mode

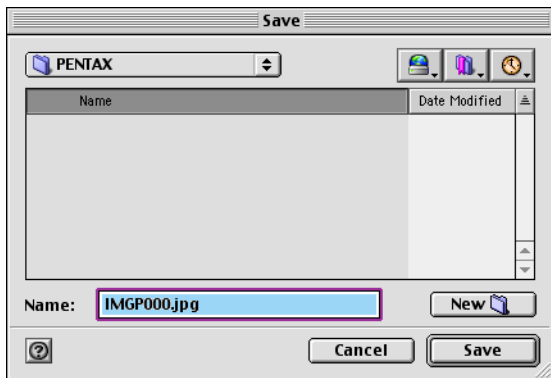
When photos are taken they are automatically saved in a set location. The rules for naming files, and the destination folder when using [Auto save setting] are set in [Optional settings] of the [File] menu.

Single Shooting Mode

In this mode one photo is taken at a time and then saved. When you take a picture in this mode, the shot you have taken is displayed in the PENTAX REMOTE Assistant window as follows.



At the same time, the following [Save] dialog box is displayed. You can alter the file name or the destination folder here. Once you click [Save], the file is saved in the specified destination folder under the specified file name.



- If you click [Cancel] on the [Save] dialog box, or forcefully close the dialog box, the picture cannot be saved. So, take care with this.
- If the camera's power goes OFF, any unsaved pictures will be lost.

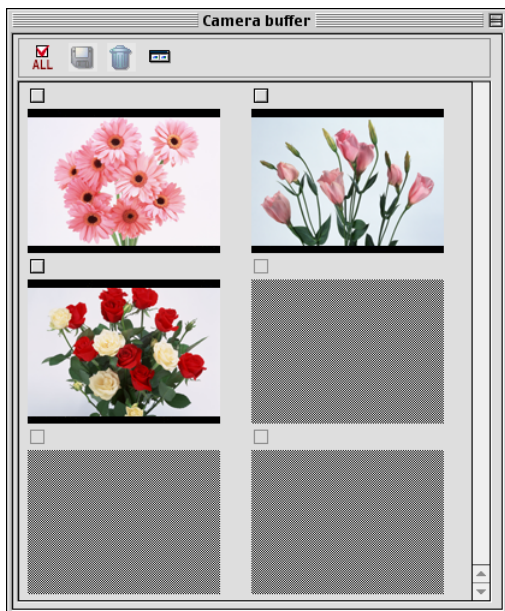


The default file names and destination for saving shown in the [Save] dialog box are according to the contents of the settings made in the [Optional settings] of the [File] menu.

Buffer Selection Mode

In this mode, after taking a number of photos, they are put together for processing, such as saving or deleting them. Once you select this mode, the [Camera buffer] window is displayed.

The pictures you take are displayed in order in the [Camera buffer] window as follows.



- When the [Camera buffer] window is being displayed, if you switch to either the Single shooting mode or the Auto save mode, the [Camera buffer] window will close and you will not be able to save the pictures you have taken.
- If the camera's power goes OFF, the contents of the buffer will be lost.
- When the camera is in the Buffer selection mode, your picture data is temporarily stored in the camera's internal buffer memory, so if the buffer memory becomes full, you will not be able to take any more pictures. Save the data to files at the appropriate time.
- When the Noise Reduction function of the Custom Settings is On, you can take up 5 pictures.
 - ☞ P.115, P.127 of operating manual for your camera.
 - ☞ P.32

There are tool icons under the title bar on the [Camera buffer] window. Once you select a desired picture and click the tool icon, you can employ any of its processes-saving, deleting, etc.

Selecting a Picture

As you check the boxes () above each of the pictures, a check mark appears and the picture is selected.



Selecting all the Pictures (Select All)

You can select all the pictures by clicking this icon.



Saving Pictures (Capturing)

This saves selected pictures. The [Save] dialog box appears for each picture; once you click [Save], a file is saved in the specified destination folder under the specified file name.



The default file names and destination for saving shown in the Save dialog box are according to the contents of the settings made in the Environmental Settings of the File menu.



Deleting Pictures (Deleting Specified Pictures)

This deletes selected picture(s) from the buffer. Deleted pictures disappear from the [Camera buffer] window.



Take care as once a picture is deleted, it cannot be recovered.



Enlarging/Shrinking the Size of Windows (Expanding/

Shrinking)

You can display the [Camera buffer] window with an enlarged/shrunk header & footer. When it is shrunk, you can use the scroll bar to display your pictures.

Auto Save Mode

When photos are taken they are automatically saved in a set location. The rules for naming files, and the destination folder when using Auto-Save are according to the settings in [Optional settings] of the [File] menu.

Optional Settings

Settings are made for things like the location and file names when using the Auto save mode or AF operation with Remote Release, etc. If you select [Optional settings] from the [File menu] (or from the tool bar), the following [Optional settings] window appears.



Auto-save setting — Folder to be saved/Base file name/Sequential number figure

This sets the folder in which files will be saved, the text at the beginning of the file name and the number of digits for consecutive numbering at the end of the file name, which will be used in the Auto save mode.

The default values set here are also followed in the Single shooting mode and when saving files in the Buffer selection mode.

AF with Remote Release

Choose whether or not to activate the operation of AF (auto-focus) when taking pictures by clicking the Release button.

After making settings for each item, when you click the [OK] button, the settings are saved and the [Optional settings] window is closed.

Taking Pictures

The basic procedures for taking pictures are explained here.

After positioning your camera, connecting to the computer and starting up the PENTAX REMOTE Assistant, use the following procedures to take pictures.







- For information about the PENTAX REMOTE Assistant's [Shooting condition set window] and the [Camera setting window], refer to Settings for Shooting (View menu/Operations menu) (P.20). "Settings for Shooting ([View] menu/[Operation] menu)" (P.20)
- For more detailed information about settings for shooting conditions or other camera operations, please refer to the operating manual for your camera.

1

Make any adjustments to the size of your subject and its position while looking through the camera's viewfinder.





- P.39 of operating manual for your camera.

2 Make settings such as capture mode, metering method, focus mode, focus point mode (AUTO/SEL/[□]), etc. on the camera itself.

-  Capture Mode : P.59 of operating manual for your camera.
-  Metering method : P.57 of operating manual for your camera.
-  Focus mode : P.70 of operating manual for your camera.
-  Focus point mode (AUTO/SEL/[□]) : P.74 of operating manual for your camera.

3 Select a mode (Single shooting/Buffer selection/Auto save) from either the [File] menu of the PENTAX REMOTE Assistant or the tool bar.

If needed, make settings to the PENTAX REMOTE Assistant environment with [Optional Settings].

-  “Single Shooting Mode” (P.14)
-  “Buffer Selection Mode” (P.15)
-  “Auto Save Mode” (P.17)
-  “Optional Settings” (P.17)

4 Check and make changes as necessary to shooting conditions settings, etc., with the [Shooting condition set window] and the [Camera Setting window].

-  “Settings for Shooting ([View] menu/ [Operation] menu)” (P.20)

5 For Auto-focus, select [AF execution] from the [Operation] menu (or from the tool bar).

6 Click the Release button in the [PENTAX REMOTE Assistant] window.

A picture is taken in the selected mode.

For the Auto save mode, picture data is saved at the same time the picture is taken.

In the Single shooting mode and the Buffer selection mode, confirm the image to be saved, specify a file name and destination and then save.

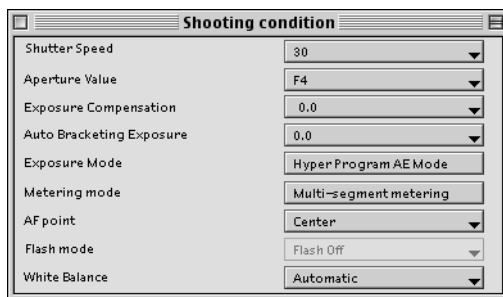
Settings for Shooting ([View] menu/ [Operation] menu)

You can check and make changes as needed to camera shooting settings with the PENTAX REMOTE Assistant. To check or make changes to shooting condition or picture quality settings, you can use the [Shooting condition set window] and the [Camera setting window].

In addition, it is possible to manually set the White Balance with the PENTAX REMOTE Assistant, without touching the camera.

[Shooting Conditions] Window ([View] menu)

If you select the [Shooting condition set window] from the [View] menu, the [Shooting condition] window will be displayed. The content of shooting conditions currently set in the camera, such as Exposure Mode, Aperture Value, Flash mode, etc., are displayed in the window.



If you switch the Capture mode with the mode dial on the body of the camera, switch the metering mode with the metering mode lever, etc., the displayed contents will also change.



- Items that cannot be altered with the PENTAX REMOTE Assistant are grayed out.
- You can check the current settings for the [Exposure Mode] and [Metering mode] (metering method), but you cannot make changes with the PENTAX REMOTE Assistant. Make the settings on the body of the camera.

If you click the ▼ of the right of an item, a drop-down list of choices is displayed. By selecting a desired value from the list, you can change the settings on the camera.

For detailed information about each item in the [Shooting Condition] window, refer to the appropriate page in your camera's operating manual.

● **[Shutter Speed]**

☞ P.61, P.62, P.136 of operating manual for your camera.

● **[Aperture Value]**

☞ P.61, P.64, P.137 of operating manual for your camera.

● **[Exposure Compensation]**

☞ P.79 of operating manual for your camera.

● **[Auto Bracketing Exposure]**

☞ P.82 of operating manual for your camera.

● **[Exposure Mode]**

☞ P.59 of operating manual for your camera.



Changes to settings cannot be made with the PENTAX REMOTE Assistant.

● **Metering mode (=metering method)**

☞ P.57 of operating manual for your camera.



Changes to settings cannot be made with the PENTAX REMOTE Assistant.

● **AF Point (=focus point)**

☞ P.74 of operating manual for your camera.



If you set the Focus point select dial to SEL (=select mode) on the camera body, you can make changes to the Focus Area (focus point).

● **[Flash mode]**

☞ P.86 of operating manual for your camera.



When the flash is up on the camera and can be used, it is possible to make changes to the [Flash mode].

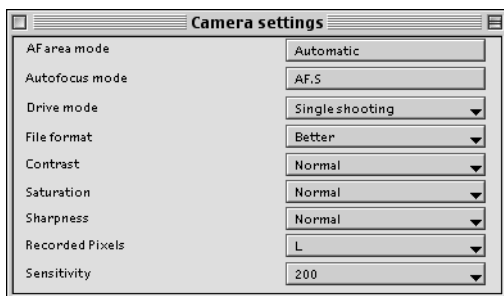
● [White Balance]

- ☞ P.55, P.142 of operating manual for your camera.
- ☞ “Manual White Balance Metering ([Operation] menu)” (P.23)

Camera Settings Window ([View] menu)

If you select [Camera setting window] from the View menu, the [Camera settings] window will appear.

The [Camera settings] window displays the Drive mode, File format (Quality), Recorded Pixels, etc., and the current shooting, quality, etc., settings for the camera.



If you switch the Drive mode with the Drive Button on the body of the camera, or change the recording size or quality etc., the displayed contents will also change.



- Items that cannot be altered with the PENTAX REMOTE Assistant are grayed out.
- You can check the current settings for the [AF area mode] (focus point mode: AUTO/SEL/☐) and the [Autofocus mode], but you cannot make changes with the PENTAX REMOTE Assistant. Make the settings on the body of the camera.

If you click the ▼ of the right of an item, a drop-down list of choices is displayed. By selecting a desired value from the list, you can change the settings on the camera.

For detailed information about each item in the [Camera settings] window, refer to the appropriate page in your camera's operating manual.

● [AF area mode] (=focus point mode : AUTO/SEL/☐)

- ☞ P.74 of operating manual for your camera.



Changes to settings cannot be made with the PENTAX REMOTE Assistant.

● [Autofocus Mode]

☞ P.70 of operating manual for your camera.



Changes to settings cannot be made with the PENTAX REMOTE Assistant.

● [Drive mode]

☞ P.44 of operating manual for your camera.

● [File format] (=Quality)

☞ P.52 of operating manual for your camera.

● [Saturation]

☞ P.117 of operating manual for your camera.

● [Sharpness]

☞ P.117 of operating manual for your camera.

● [Contrast]

☞ P.118 of operating manual for your camera.

● [Recorded Pixels]

☞ P.51 of operating manual for your camera.

● [Sensitivity]

☞ P.54 of operating manual for your camera.

Manual White Balance Metering ([Operation] menu)

You can use the PENTAX REMOTE Assistant to set the White Balance manually by following the procedures below.

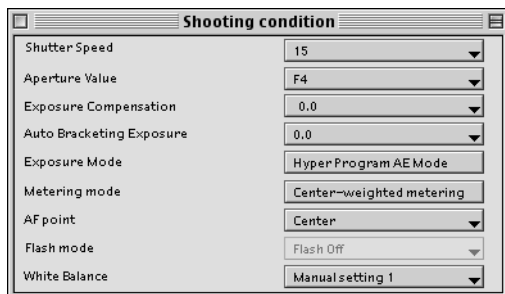


- In order to reproduce subtle colors under the lighting conditions in which you are shooting, a baseline white is metered, and then you can make manual settings for up to three types. This setting is called Manual White Balance.
- For more detailed information about White Balance and Manual White Balance, refer to your camera's operating manual, P.55 and P.142.

- 1 Select the [Shooting condition set window] from the [View] menu of the PENTAX REMOTE Assistant.

The [Shooting condition] window is displayed.

- 2 Click the ▼ on the right side of [White Balance] in the [Shooting condition] window and select one of in the drop-down list, from Manual 1 to Manual 3.

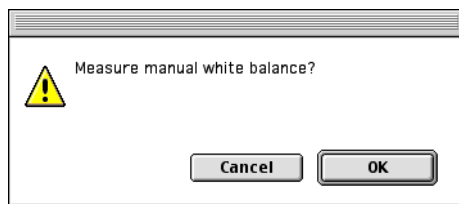


You can set the Manual White Balance to any of the three settings, 1 to 3.

- 3 Select Capture mode with the mode dial on the body of the camera, and put a sheet of white or gray paper so it completely fills up the viewfinder.

- 4 Select [Measure white balance] from the [Operation] menu.

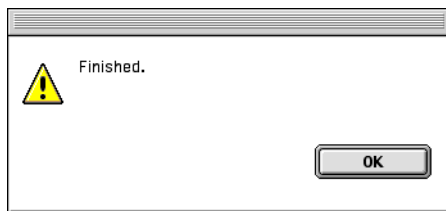
A confirmation dialog box will appear.



- 5 Click the OK button and check the LCD monitor of your camera.

The camera's shutter release button is pressed and if the setting is correct, the LCD monitor will display [OK].

The following message of will appear on your computer's screen. Click the OK button.



Remote Interval/Bracket shoot ([Operation] Menu)

When you use the PENTAX REMOTE Assistant, the following two shooting functions of the Remote Interval/Bracket shoot can be used in addition to the normal shooting functions.

Interval/Timer shooting

You can shoot with a great deal of flexibility using the Interval and Timer shooting settings. (These functions are not available on the camera body)

Expanded bracket shooting

You can easily make even more exact settings and finer pictures than is possible using the settings for Auto Bracketing Shooting that can be made with the camera.

 Auto Bracketing Shooting: Camera's operating Manual P.82



We recommend using an AC adaptor when connecting your camera to a computer.



- When you use Remote Interval/Bracket shoot, the camera always goes to Auto Save mode, so the pictures you take are automatically saved.
- The Auto Save mode remains activated even after you finish Remote Interval/Bracket shoot.

Interval/Timer Shooting ([Operation] Menu)

The following procedures for Interval shooting allow you to shoot a specified number of pictures in a specified interval of time. As a highly flexible Timer shooting function, you can also shoot just one picture during a specified time.



The Timer shooting here differs from the Camera Self-timer Shooting, which shoots after about 12 seconds.

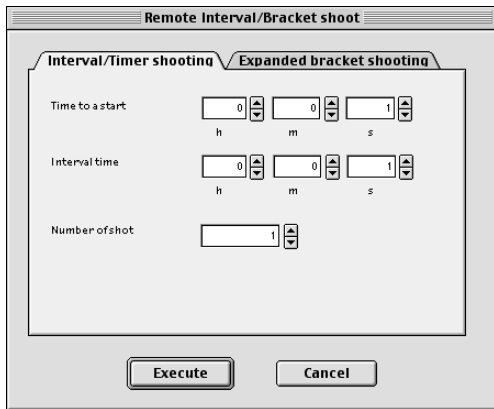
1

Select [Remote Interval/Bracket shoot] from the [Operation] menu of the PENTAX REMOTE Assistant.

The [Remote Interval/Bracket shoot] window is displayed.

2 Click the Interval/Timer shooting tab in the [Remote Interval/Bracket shoot] window.

The settings screen for Interval/Timer shooting will appear.



3 Make the settings for [Time to a start], [Interval Time], and [Number of shot].

- **Time to a start:** Sets the time before starting to shoot (how many hours, minutes and seconds before shooting). You can set this anywhere in the range from zero second to 9 hours, 59 minutes and 59 seconds.
- **Interval time:** In the case of interval shooting, this sets the interval between shots. You can set this anywhere in the range from zero second to 9 hours, 59 minutes and 59 seconds.
- **Number of shot:** Sets the total number of shots to take. This can be set in the range from 1 to 999 shots. When using Timer Shooting, this is set at one shot.

4 Click the [Execute] button.

This executes Interval/Timer shooting according to the settings and files are automatically saved.



When you take pictures with interval shooting, the number of missing frames due to out of focus by AF.S or other reasons will be displayed at [Number of miss shots] after the shooting session.

Expanded Bracket Shooting ([Operation] Menu)

With the finer settings, high-level Auto-Bracketing shots are possible.

☞ Auto Bracketing Shooting: Camera's operating Manual P.82

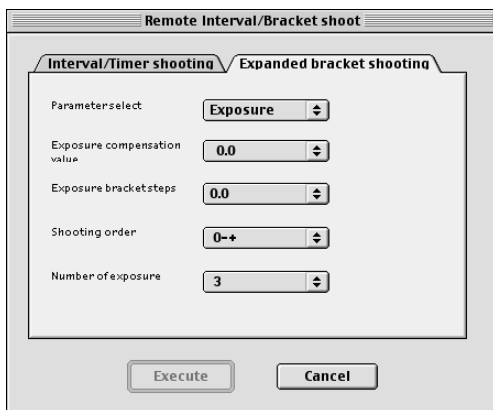
In addition, you can make changes to not only [Exposure], but also [Saturation], [Contrast], and [Sharpness] for shooting your pictures. Follow the procedures and shoot.

1 Select [Remote Interval/Bracket shoot] from the [Operation] menu of the PENTAX REMOTE Assistant.

The [Remote Interval/Bracket shoot] window is displayed.

2 Click the [Expanded bracket shooting] tab in the [Remote Interval/Bracket shoot] window.

The [Expanded Bracket shooting] settings screen will appear.

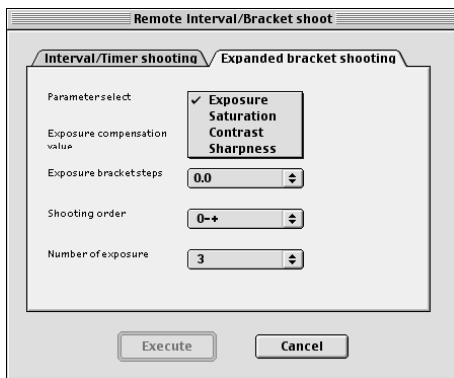


3 Select the parameters you wish to change when you shoot from the drop-down [Parameter select] list.

Select [Exposure] when you choose Auto Bracketing Shooting. Alternatively, if you change the [Saturation], [Contrast], or the [Sharpness] when you take pictures, select the desired parameter. In the following example, [Exposure] has been selected.



If you select the Green Program mode, [Exposure] is not displayed.



4 Set the [Exposure compensation value], [Exposure bracket steps], [Shooting order] and [Number of exposure].

- **Exposure compensation value:**
Sets the exposure compensation value to be used as the standard for shooting. Shooting then centers on the value set here as (0) and switches between the - (under) and + (over) directions. If you do not wish to make an adjustment to the standard, select (0).
- **Exposure bracket steps:**
Sets the width of the exposure adjustments, which are changed when you shoot. Shots are taken with compensation to exposure according to the value set here in the - (under) and + (over) directions. Set a value other than 0.0.
- **Shooting order:**
Sets the order for shooting. 0 = no adjustment, - = under side, + = over side.
- **Number of exposure:**
Sets the total number of shots to take. This can be set in the range from three to nine shots (only odd number can be entered).



- If you fail to set the [Exposure bracket steps] to something other than 0.0, you will not be able to take pictures.
- If you select a parameter other than [Exposure], (that is, [Saturation], [Contrast], [Sharpness]), you can only set the [Shooting order].
- If you select the Green Program mode, you cannot change the value of the exposure compensation and the exposure bracket step.
- When the image taken by the Expanded bracket shooting is displayed on the PENTAX PHOTO Browser, [Bracket Off] is displayed in the Image data pane.

5 Click the [Execute] button.

This executes Expanded bracket shooting according to the settings and files are automatically saved.



During shooting a dialog box indicating the status will be displayed. You can discontinue shooting by clicking the [Cancel] button on the dialog box.

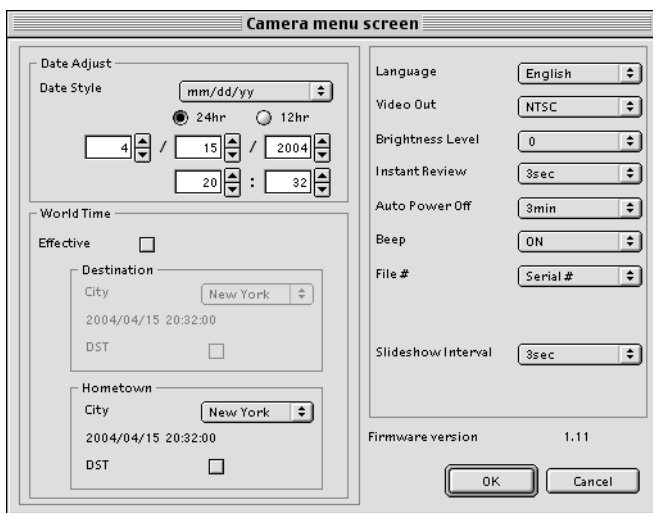
Camera Menu Screen ([Operation] Menu)

You can check and make changes as needed to the contents of the camera settings menu with the PENTAX REMOTE Assistant. In addition, you can check the settings of custom functions (three types) and make changes or call-outs as needed.

Camera Menu Screen ([Operation] Menu)

If you select the Camera menu screen window from the [Operation] menu, the [Camera menu screen] window will be displayed.

The content of the settings menu that are currently set in your camera are displayed in the [Camera menu screen] window, namely, date/time set, world time, language settings, etc.



If you click the ▼ of the right of an item, a drop-down list of choices is displayed. By selecting a desired value from the list, you can change the contents of the camera settings menu.

After making changes, if you click the [OK] button, the contents of the settings menu are changed.

For detailed information about each item in the settings menu, refer to the appropriate page in your camera's operating manual.

● **Date Adjust**

- Switch between a 24-hour display and a 12-hour display by clicking the radio button ().
- Change the date/time by either entering numbers in directly or by clicking the up/down buttons on the right side.
 - ☞ P.120 of operating manual for your camera.

● **World Time**

- To activate World Time, check the box of the right of [Effective].
- To activate Daylight Savings Time, check the box of the right of [Effective].
 - ☞ P.120 of operating manual for your camera.

● **Language**

- ☞ P.122 of operating manual for your camera.

● **Video Out**

- ☞ P.123 of operating manual for your camera.

● **Brightness Level**

- ☞ P.123 of operating manual for your camera.

● **Instant Review**

- ☞ P.118 of operating manual for your camera.

● **Auto Power Off**

- ☞ P.119 of operating manual for your camera.

● **Beep**

- ☞ P.119 of operating manual for your camera.

● **File #**

- ☞ P.124 of operating manual for your camera.

● **Slideshow Interval**

- ☞ P.125 of operating manual for your camera.



- The firmware version of the camera is displayed on the bottom right of the [Camera menu screen] window.
- When you do not wish to make any changes to settings, click [Cancel].

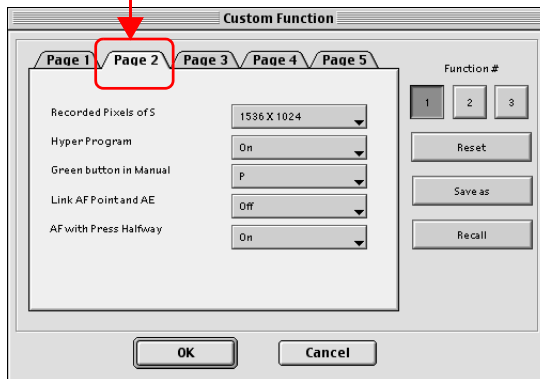
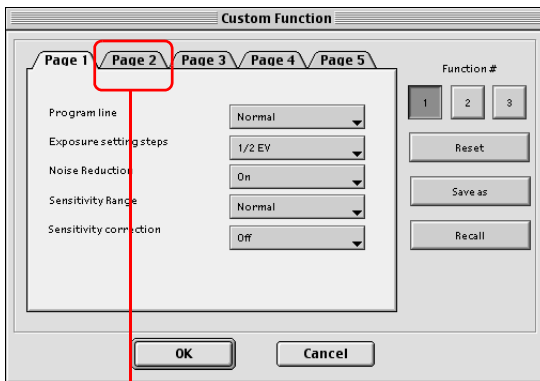
Custom Function ([Operation] Menu)

If you select [Custom Function] from the [Operation] menu, the [Custom Function] window will be displayed. Custom function information set in the camera settings menu is displayed in the [Custom Function] window.

☞ P.115, P.127 of operating manual for your camera.

If you click the [Function #] buttons on the top right of the screen, the desired custom function can be called out.

You can switch between pages by clicking the select tabs [Page1] to [Page5].



If you click the ▼ to the right of an item, a drop-down list of choices is displayed. By selecting a desired value from the list, you can change the settings of the custom function.

After making changes, if you click the OK button, the contents of the custom function are changed. In addition, you can save to the settings content files, call out from the files, reset them, etc.

For detailed information about each item in the [Custom Function], refer to page 127 in your camera's operating manual.

Making Settings to a Selected Custom Function

The following procedures are for selecting and making settings for a desired custom function.

1 Select [Custom Function] from the [Operation] menu of the PENTAX REMOTE Assistant.

The [Custom Function] window will appear.

2 Select the desired custom function number by clicking the numbered button on the top right of the screen.

The content of the settings for the custom function you selected is displayed.

3 Click the OK button.

The selected custom function is set and the [Custom Function] window closes.

Changing Custom Function Settings

Use the following procedures to make changes to custom function settings.

1 Select [Custom Function] from the [Operation] menu of the PENTAX REMOTE Assistant.

The [Custom Function] window will appear.

-
- 2 Select the number of the custom function you wish to change by clicking the numbered button on the top right of the screen.**

The content of the settings for the custom function you selected is displayed.

-
- 3 Click the tabs, [Page1] - [Page5] to switch among the pages and then make changes to the settings of the various items.**

-
- 4 Click the [OK] button.**

The changes to the content of the custom function are set and the [Custom Function] window closes.

Saving Custom Function Settings to File

Apart from the 3 custom functions, you can save the current settings to file. You can call out and use saved settings from file at any time. Use the following procedures to save to custom function settings to file.

-
- 1 Select [Custom Function] from the [Operation] menu of the PENTAX REMOTE Assistant.**

The [Custom Function] window will appear.

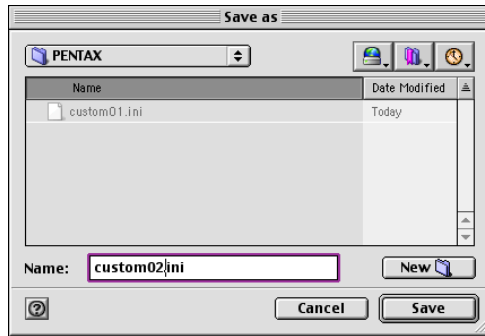
-
- 2 Select the number of the custom function you wish to save to file by clicking the numbered button on the top right of the screen.**

The content of the settings for the custom function you selected is displayed.

-
- 3 Make any changes needed to current settings.**

-
- 4 Click the [Save as] button.**

The following [Save As] dialog box is displayed.



5 Select the destination to save to, enter an file name and then click [Save].

The file is saved in the specified destination under the specified file name and the dialog box closes.



The file extension .ini is added automatically to the file name.

6 Click the [OK] button in the [Custom Function] window.

The custom function is set and the [Custom Function] window closes.

Reading Custom Function Settings from File

You can call out and use the settings you saved to file. Use the following procedures to read custom function settings from a file.

1 Select [Custom Function] from the [Operation] menu of the PENTAX REMOTE Assistant.

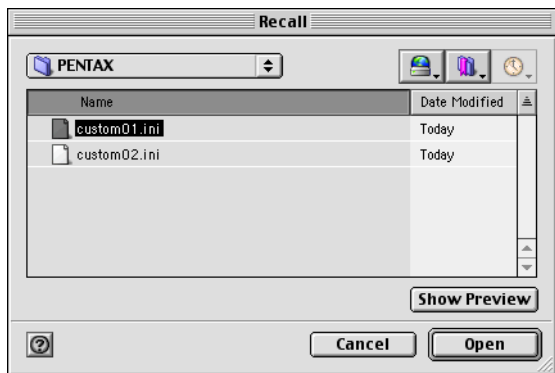
The [Custom Function] window will appear.

2 Click the numbered button on the top right of the screen, selecting the custom function number for which you wish to make settings to file.

The content of the settings for the custom function you selected is displayed.

3 Click the [Recall] button.

The following [Recall] dialog box is displayed.



4 Open the folder where the file was saved, select the desired file and click [Open].

The specified file is read and the contents of its settings are displayed in the [Custom Function] window.



The names of settings files that have been saved end with the file extension .ini.

5 Click the [OK] button in the [Custom Function] window.

The called out custom function is set and the [Custom Function] window closes.

Resetting Custom Function Settings

You can return settings to the factory default status by resetting the settings.

Use the following procedures to reset custom function settings.

-
- 1 Select [Custom Function] from the [Operation] menu of the PENTAX REMOTE Assistant.**

The [Custom Function] window will appear.

-
- 2 Select the number of the custom function you wish to reset by clicking the numbered button on the top right of the screen.**

The content of the settings for the custom function you selected is displayed.

-
- 3 Click the [Reset] button.**

The settings are reset, returning them to the factory default status.

-
- 4 Click the [OK] button in the [Custom Function] window.**

The reset custom function settings are made and the [Custom Function] window closes.

Working with Related Software

If you use the Assistant along with the PENTAX PHOTO Browser and/or the PENTAX PHOTO Laboratory, you can do everything from your computer, from reviewing and managing the data of your pictures to converting file formats, etc. -all in one continuous flow.

For information on how to operate the PENTAX PHOTO Browser and/or the PENTAX PHOTO Laboratory, please see the PENTAX PHOTO Browser/PENTAX PHOTO Laboratory operating manual(s).

PENTAX PHOTO Browser (Image Management/Reviewing)

The PENTAX PHOTO Browser is software for reviewing and managing the data of pictures you have taken. It is compatible with the camera's own CCD RAW image data (.pef), TIFF (.tif), and JPEG (.jpg).

You can easily check shooting information, save shooting information as a list, simply display RAW image data, etc.

PENTAX PHOTO Laboratory (RAW Data Expansion/Conversion)

PENTAX PHOTO Laboratory is software for reading and expanding the camera's own CCD RAW image data (.pef), and making fine adjustments/processing of the tone curve, white balance, etc.

In addition, you can convert and save files to 8 or 16 bit TIFF (.tif) or JPEG (.jpg) formats.

Exif-TIFF format

Exif stands for Exchangeable Image File Format. This image file format is based on the TIFF image data format, and allows thumbnail images and image properties to be embedded into the data. Software that does not support this format processes the image as a regular TIFF image.

Exif-JPEG format

Exif stands for Exchangeable Image File Format. This image file format is based on the JPEG image data format, and allows thumbnail images and image properties to be embedded into the data. Software that does not support this format processes the image as a regular JPEG image.

CCD RAW data

CCD stands for Charge Coupled Device. A semiconductor device that converts optical information into electrical signals. RAW image data is raw data recorded from CCD output. This data can be transferred to a PC, and manipulated into image data with unique settings such as JPEG and TIFF using specialized software.

JPEG

An image compression format. Select INGPE2_C (S. Fine), INGPE2_D (Fine), or INGPE2_E (Economy) for image quality, and the image is saved in JPEG format. Although the image quality deteriorates a little, more images can be saved in the same space.

TIFF

A file format for saving image data. The image is not compressed making the file size large, but no deterioration of image quality occurs.

TIFF16

Although TIFF images are usually 8 bit, this is 16 bit TIFF. One 8 bit pixel can reproduce 256 colors. More computations are required when image processing as the dynamic range is larger.

sRGB (standard RGB)

An international color space standard defined by IEC (International Electrotechnical Commission). This is specified as a standard color space for generic PC monitors and Exif.

AdobeRGB

This color space is recommended for commercial printing and document creation by Adobe Systems (US). Its color reproduction range is larger than sRGB, and adequately covers the color reproduction range for printing. Therefore, color data only reproducible on a printer are not lost when editing on the PC. Note: using it with unsupported software causes the colors to appear faint.