

PC Connection Manual

You can transfer images and movies captured with your digital camera to your computer and then display and manage them by installing the software included on the provided CD-ROM to your computer and connecting your digital camera to your computer with the USB cable. This section explains how to install the provided software "ACDSee for PENTAX" and "ACDSee 2 for Mac", and the other necessary preparations for enjoying your digital camera pictures and movies on your computer.

PENTAX and Optio are trademarks of PENTAX Corporation.
 © 2008 ACD Systems Ltd. All rights reserved. ACDSee and the ACDSee logo are trademarks of ACD Systems Ltd. in Canada, the U.S., Europe, Japan and other countries.
 Microsoft and Windows are registered trademarks of Microsoft Corporation in the United States and other countries.
 Windows Vista is either a registered trademark or trademark of Microsoft Corporation in the United States and/or other countries.
 Mac OS and Macintosh are registered trademarks of Apple Inc.
 All other brands or product names are trademarks or registered trademarks of their respective companies.



Software Provided

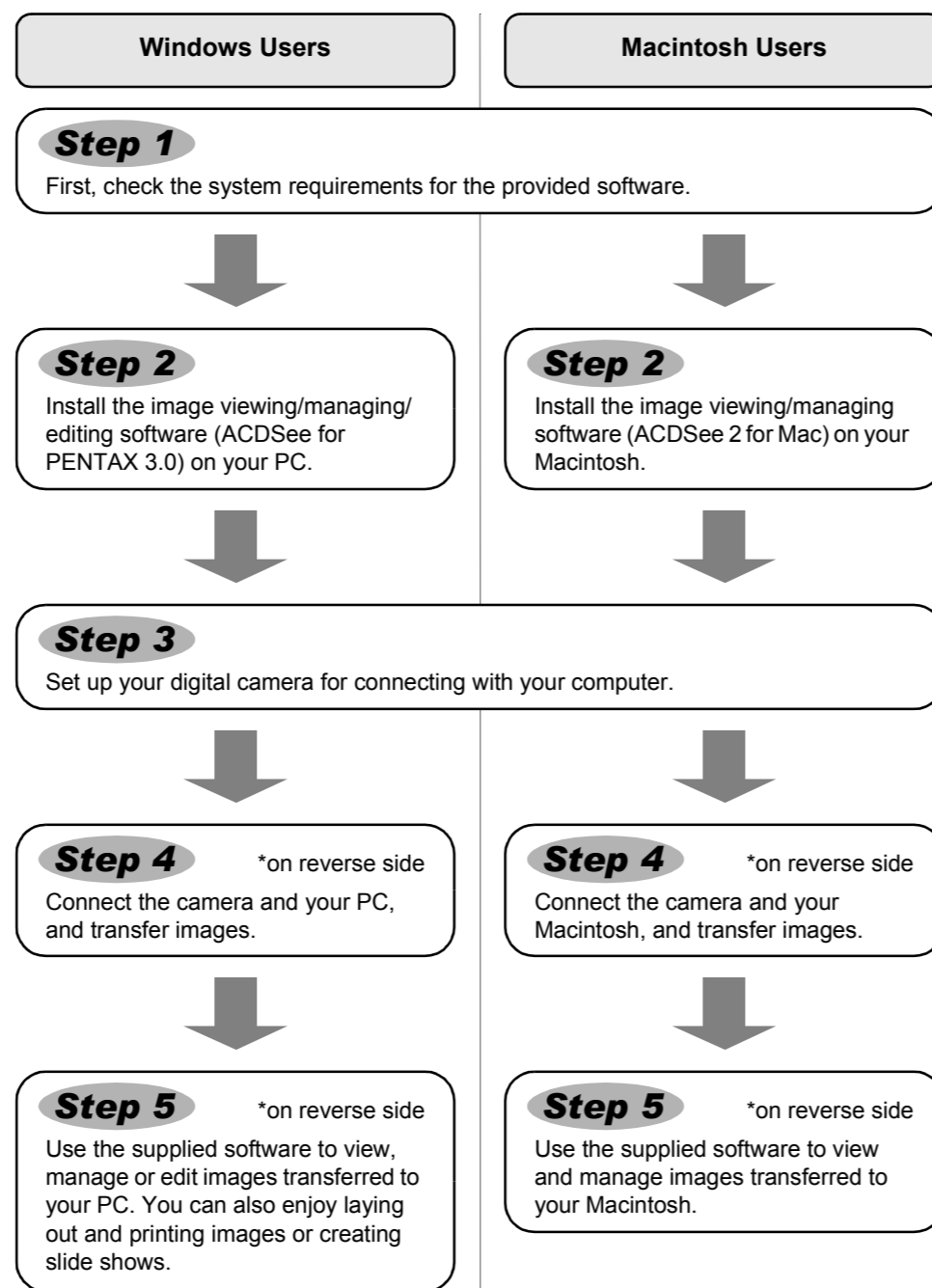
Windows

- ACDSee for PENTAX 3.0 (Image viewing/managing/editing software)

Macintosh

- ACDSee 2 for Mac (Image viewing/managing software)

Caution You are recommended to use an AC adapter connected to a power outlet when connecting the camera to a computer. If the battery runs out of power while images are being transmitted to the computer, the image data may be lost or damaged. When using an AC adapter, make sure that the AC plug cord is properly connected to the camera.



Windows, Macintosh Step 1

System Requirements

Windows System Requirements

- Caution** USB connection and the included application software do not support Windows 95, Windows 98, Windows 98SE, Windows Me and Windows NT.
- **USB connection**
 - OS : Windows 2000, Windows XP, Windows Vista (The OS must be preinstalled and updated to the latest version.)
 - USB port must be standard equipment
 - **Application Software**
 - **<ACDSee for PENTAX 3.0>** (Nine languages: English, French, German, Spanish, Italian, Russian, Chinese [traditional and simplified], Korean, Japanese)
 - OS : Windows 2000, Windows XP or Windows Vista
 - CPU : Pentium III or higher
 - Memory : 256 MB minimum (512 MB or more recommended)
 - Hard Disk space : 100 MB minimum (1 GB or more recommended)
 - CD-ROM drive
 - Monitor : Display adapter capable of displaying a minimum of 256 colors
 - Internet Explorer 5.0 or later
 - **<ACDSee 2 for Mac>** (Six languages: English, French, German, Spanish, Italian, Japanese)
 - OS : Mac OS 9.2, Mac OS X (Ver. 10.1.2 - 10.5) (The OS must be preinstalled and updated to the latest version.)
 - CPU : Power Macintosh 233 MHz or higher
 - Memory : 8 MB minimum
 - Hard Disk space : 6 MB minimum
 - CD-ROM drive, QuickTime 4.0 or later
- * The OS must be preinstalled and updated to the latest version.
 * Operation is not guaranteed on all computers meeting the system requirements.
 * The system requirements describe the minimum environment for playing and editing movies.

The versions of Internet Explorer, Windows Media Player and DirectX required for use of ACDSee for PENTAX 3.0 are not included in the provided CD-ROM (S-SW77). Visit the following sites to download necessary items and install/update them on your PC.

- Internet Explorer
<http://www.microsoft.com/windows/downloads/ie/getitnow.aspx>
- Windows Media Player
<http://www.microsoft.com/windows/windowsmedia/default.aspx>
- DirectX
<http://www.microsoft.com/windows/directx/default.aspx>

Windows Step 2

Installing the Software

Install the image viewing/managing/editing software (ACDSee for PENTAX 3.0).

- Caution**
- Make sure your PC meets the system requirements before installing the software.
 - When multiple accounts have been setup in Windows 2000, Windows XP or Windows Vista, log on with an account that has administrative rights before installing the software.

- 1 Turn your PC on.
- 2 Insert the CD-ROM (S-SW77) into the CD-ROM drive.
The language selection screen appears.

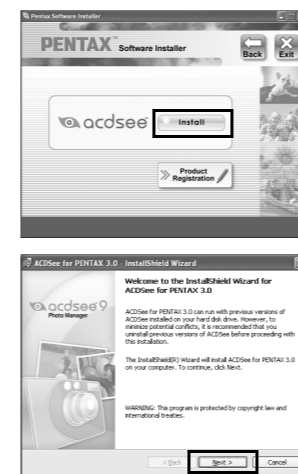
If you are using Windows Vista
 When the [AutoPlay] screen appears, display the language selection screen following the steps below.
 1) Click [Run setup.exe].
 2) Click [Allow].
 The language selection screen appears.

If the language selection screen does not appear
 Display the language selection screen following the steps below.
 1) Double-click [My Computer] on the desktop.
 2) Double-click the [CD-ROM drive (S-SW77)] icon.
 3) Double-click the [Setup.exe] icon.

- 3 Choose a language from the displayed screen.
The ACDSee for PENTAX 3.0 installation screen appears.



- 4 Click [Install].
Setup screen appears. Follow the on-screen guidance and enter the registration information. Reboot your PC after installation is finished.

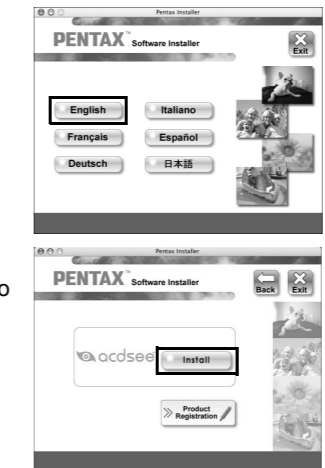


Macintosh Step 2

Installing the Software

Install the image viewing/managing software (ACDSee 2 for Mac).

- 1 Turn your Macintosh on.
- 2 Insert the CD-ROM (S-SW77) in the CD-ROM drive.
- 3 Double-click the CD-ROM (S-SW77) icon.
- 4 Double-click the [ACDSee Install] icon.
The language selection screen appears.
Double-click the [Master Installer] icon to display the language selection screen.
- 5 Choose a language from the displayed screen.
The ACDSee 2 for Mac installer screen appears.



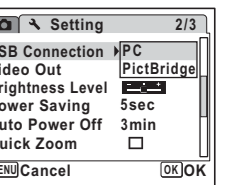
- 6 Click [Install].
The setup screen appears. Follow the on-screen guidance to input registration information and install the software.

Windows, Macintosh Step 3

Setting Up Your Digital Camera

Setting the USB Connection Mode to [PC]

- 1 Press the MENU button.
- 2 Press the four-way controller (▶) to display the [Setting] menu.
- 3 Use the four-way controller (▲▼) to select [USB Connection].
- 4 Press the four-way controller (▶).
A pull-down menu appears.
- 5 Use the four-way controller (▲▼) to select [PC].
- 6 Press the OK button.



Caution If the digital camera is connected to your PC in [PictBridge] USB Connection mode, the images cannot be transferred. Disconnect the USB cable from your camera and PC to set the USB Connection mode to [PC], and then reconnect the USB cable.

Product Registration on the Internet

If your PC is connected to the Internet, please click [Product Registration] on the setup screen in **Step 2**. A world map for Internet Product Registration is displayed.

Click the displayed country or region and then follow the instructions to register your product.



Thank you very much for your cooperation.

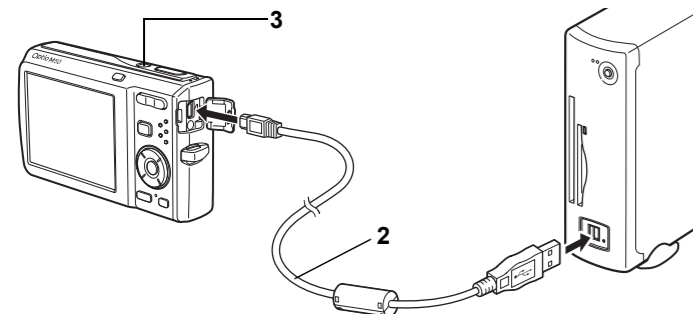
memo Only customers in displayed countries and regions can register their products on the Internet Product Registration.

Transferring Images to a Windows PC

When the digital camera is connected to your Windows PC and the camera is turned on, the PC automatically recognizes the camera and the confirmation dialog box for transferring images (the Device Detector screen) appears.

Connecting the Camera and PC

- 1 Turn your PC on.
- 2 With your camera turned off, connect it to your PC using the USB cable. Connect the terminal of the AV cable with pointing toward the on the PC/AV terminal of the camera. If there is no SD Memory Card in the camera, the images stored in the built-in memory will be transmitted to your PC.

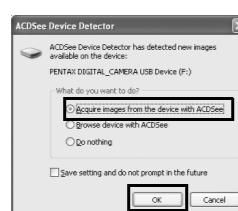


- 3 Turn your camera on. The Device Detector screen appears automatically. If the Device Detector screen does not appear, display and copy the images following the steps in "When the Device Detector screen does not appear".

The self-timer lamp blinks while the camera is connected to a PC with the USB cable.

Transferring Images

- 4 Confirm that [Acquire images from the device with ACDSee] is checked and click [OK].



- 5 Click [Next].

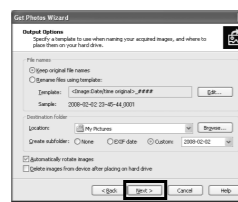


- 6 Select an image to copy and click [Next].



- 7 Specify [File names] and [Destination folder], and click [Next].

The image is copied to the PC.



- 8 Click [Finish].

The ACDSee for PENTAX 3.0 Browser starts.

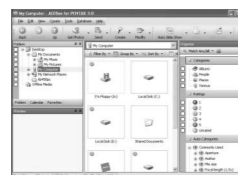


When the Device Detector screen does not appear

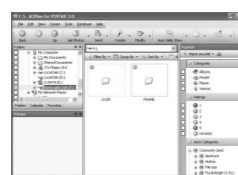
- 4 Double-click the [ACDSee for PENTAX 3.0] icon on the desktop.



- 5 Click [My Computer].



- 6 Double-click [Removable Disk].



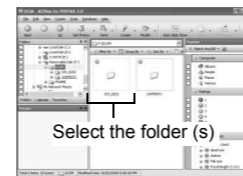
If the SD Memory Card has a volume label, the volume label name appears instead of [Removable Disk]. A new unformatted SD Memory Card may show the manufacturer name or model number.

- 7 Double-click the [DCIM] folder.

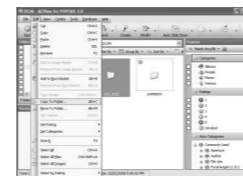
Images are stored in folders named by the shooting date ("XXX_0202" for February 2. "XXX" is a three-digit number.). If [Standard] is selected for [Folder Name] in the [Setting] menu, a folder named "XXXPENTX" (XXX is a three-digit folder number) is displayed and images are stored here.



- 8 Select the folders you want to copy to the PC.

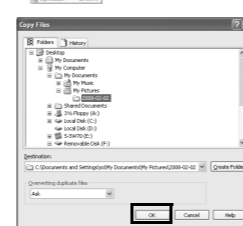


- 9 Select [Copy To Folder...] from the [Edit] menu. The Copy Files screen appears.



- 10 Specify the destination folder.

- 11 Click [OK]. The folders or images are copied to the PC.

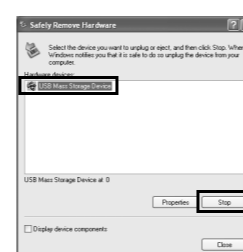


Disconnecting the Camera from Your PC

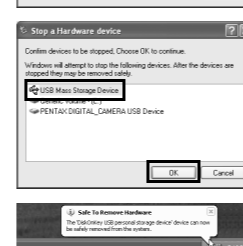
- 1 Double-click the [Safely Remove Hardware] icon in the task bar. The Safely Remove Hardware screen appears.



- 2 Select [USB Mass Storage Device] and click [Stop]. The Stop a Hardware device screen appears.



- 3 Select [USB Mass Storage Device] and click [OK]. A message appears indicating that the hardware can be safely removed.



- 4 Click [OK].

- 5 Disconnect the USB cable from your PC and the camera.
 - If the camera (removable disk) is being used by an application such as ACDSee for PENTAX 3.0, the camera cannot be disconnected until the application is closed.
 - The camera will automatically switch to the Playback Only mode when the USB cable is disconnected.

Macintosh **Step 4**

Transferring Images to a Macintosh

Connecting the Camera and Macintosh

- 1 Turn your Macintosh on.
- 2 With your camera turned off, connect it to your Macintosh using the USB cable.

If there is no SD Memory Card in the camera, the images stored in the built-in memory will be transmitted to your Macintosh.

- 3 Turn your camera on.

The camera is recognized as [NO_NAME] ([untitled] in Mac OS 9.2) on the desktop. The drive name can be changed.

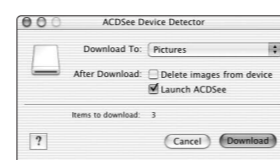


If the SD Memory Card has a volume label, the volume label name appears instead of [NO_NAME]. A new unformatted SD Memory Card may show the manufacturer name or model number. The self-timer lamp blinks while the camera is connected to a Macintosh with the USB cable.

Transferring Images

- 4 Specify a save location, make sure that [Launch ACDSee] is checked, and click [Download].

After images are copied to your Macintosh, the browser for ACDSee 2 for Mac starts.



When [Delete images from device] is checked, images are deleted from the camera after transfer is complete. Even if camera images are not transferred, they can be directly displayed on the Macintosh from a camera connected to the Macintosh.

Disconnecting the Camera from Your Macintosh

- 1 Drag [NO_NAME] on the desktop to the trash. If the SD Memory Card has a volume label, drag the icon of that name to the trash.
- 2 Disconnect the USB cable from your Macintosh and the camera.

If the camera (removable disk) is being used by an application such as ACDSee 2 for Mac, the camera cannot be disconnected until the application is closed. The camera will automatically switch to the Playback Only mode when the USB cable is disconnected.

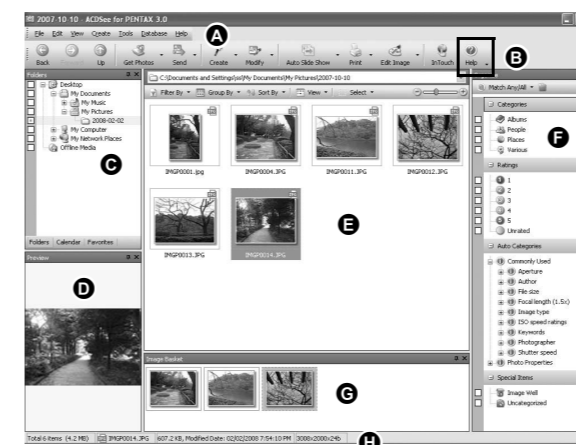
Using ACDSee for PENTAX 3.0

ACDSee for PENTAX 3.0 lets you view, edit, organize, search for, share, and print images.

Starting ACDSee for PENTAX 3.0

- 1 Double-click the [ACDSee for PENTAX 3.0] icon on the desktop. ACDSee starts and the main window, which is called the browser, appears.

ACDSee Browser Interface

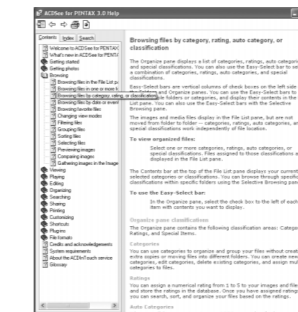


- A Menu bar
You can access the various menu commands.
- B Toolbar
Provides quick access to shortcuts for frequently used tasks and functions.
- C Folders pane
Displays the configuration of folders in your computer. When you browse a folder, the contents of the folder appear in the File List pane.
- D Preview pane
Displays a preview of the image or media file currently selected in the File List pane. You can change the size of the preview image or play back the media file.
- E File List pane
Displays the contents of the currently selected folder or the results of the most recent search, in other words the file or folder that matches the search item. It is the only pane that always appears in the Browser and it cannot be hidden or closed.
- F Category pane
Displays a list of categories and priorities. By dragging and dropping files from the File List pane to here, you can set category and priority for files.
- G Image Basket pane
Displays files selected in the File List pane. By choosing images and files and putting them in the Image Basket pane, you can use the editing and creating functions on images from different folders and categories.
- H Status bar
Displays information and properties for the selected file.

Using the Help Pages

Refer to the help pages for a more detailed description of how to use each function.

- 1 Click the [?] icon at the top right of the screen. The help screen appears.
- 2 Double-click the desired topic.



Using ACDSee 2 for Mac

ACDSee 2 for Mac lets you display and manage images.

Starting ACDSee 2 for Mac

- 1 Double-click the [ACDSee] folder inside the [Applications] folder.
- 2 Double-click the [ACDSee 2 for Mac] icon. ACDSee starts and the main window, which is called the browser, appears.

ACDSee Browser Interface



- A Menu bar
You can access the various menu commands.
- B Toolbar
Provides quick access to shortcuts for frequently used tasks and functions.
- C Folders pane
Provides the configuration of folders in your computer. When you browse a folder, the contents of the folder appear in the File List pane.
- D Preview pane
Displays a preview of the image or media file currently selected in the File List pane. You can change the size of the preview image or play back the media file.
- E Favorites pane
You can add frequently used items (folders, etc.).
- F File List pane
Displays the contents of the currently selected folder or the results of the most recent search, in other words the file or folder that matches the search item. It is the only pane that always appears in the Browser and it cannot be hidden or closed.
- G Status bar
Displays information and properties for the selected file.

Using the Help Pages

Refer to the help pages for a more detailed description of how to use each function.

- 1 Select [ACDSee™ Help] from [Help] on the menu bar. The help screen appears.
- 2 Click the desired topic.