

BE INTERESTING. **PENTAX**

PENTAX Optio

DIGITAL CAMERA COLLECTION

Optio W60

Optio A40

Optio *S12*

Optio V20

Optio M50

Optio E60



A young girl with dark hair is looking into a large, round fishbowl. Two goldfish are visible inside the bowl. The scene is captured in a soft, slightly blurred style, emphasizing the girl's perspective.

INTERESTING IS ALL AROUND.

IT IS A SWEEPING VIEW.

AN IMPULSIVE SMILE.

AN INSPIRED PERSPECTIVE.

IT IS ETERNAL.

IT IS FLEETING.

IT IS AVAILABLE FOR THE TAKING.

PENTAX Optio.

Compact digital cameras are made for the everyday. But who says the everyday has to mean the ordinary? Equipped with the latest innovations in image capture technology, Optio cameras are specifically designed for the adventurous. For the smart. For the impulsive. For wherever your eyes, or your imagination, take you.



BE BRAVE.

**BUT DON'T BE ADVERSE TO AN EXPERT OPINION.
Auto Picture Mode.**

Don't fumble the shot. Auto Picture mode lets the camera determine the shooting conditions for landscape, portrait, night scene and normal modes and more, then choose the optimum settings for each subject.

BE SPONTANEOUS.



YOU, AND YOU, AND YOU, AND UP TO 32.
Advanced Face Recognition.

In as little as 0.03 seconds, your Optio can detect and focus on up to 32 faces in a photo frame. It can even automatically shoot when your subject smiles, or warn you when they blink. Did someone say "cheese?"

Number of faces varies by camera. Blink Detection and Smile Capture may not be available on all models.



A photograph of a young child standing on a kitchen counter. The child is wearing a blue and white striped long-sleeved shirt and tan cargo pants. They are barefoot and appear to be in the middle of a balancing act or a playful activity. The counter is light-colored wood. Below the counter are dark teal cabinets with silver handles. To the right of the child, there is a black stand mixer with a whisk attachment, and a wall outlet with two sockets. The background is a bright green wall. The lighting is dramatic, with strong highlights and deep shadows.

BE NIMBLE.

STEADY ON.
Digital Shake Reduction.

A creative eye and a firm hand do not always go together. The Digital Shake Reduction feature included in all Optio reduces camera shake and subject blur when photographing still images. By automatically selecting a higher sensitivity setting, the camera can use higher shutter speeds to capture the image. Optio cameras also include Movie Shake Reduction for smooth video capture.

That's "W." As in wherever, whenever.

It's a world of extremes. The W60's waterproof, coldproof, dustproof design, along with its 10.0 megapixels and 5X internal zoom, means that it can get the shots, and get back in one piece.

FEATURES

- 10.0 megapixels for large, detailed images
- PENTAX 5X optical zoom in a slim 1.0 inch body is equivalent to 28-140mm
- Wide-angle 28mm zoom lens ideal for landscape, indoor, or group photos
- Waterproof to 13 feet protects from rain and spills, as well as allows underwater photos and video
- 2.5 inch IPS (In Plane Switching) LCD monitor with Anti-Reflective coating is viewable at wide angles, even in bright sunlight
- Coldproof for use in extreme, sub-freezing temperatures
- HD movie capture to vividly capture moving memories in widescreen 720p at 15 fps
- Advanced Face Recognition technology sees up to 32 faces in 0.03 seconds, with Smile Capture and Blink Detection
- Shake Reduction system automatically sets ISO up to a high 6400 to prevent subject blur. Movie Shake Reduction also available
- Close focusing, Super Macro mode brings out the details in even the smallest subjects from less than half an inch away



Waterproof design.

The Optio W60's new design allows it to operate up to 13 feet underwater for two hours and withstand extreme sub-freezing temperatures.



Substance meets style.

Loaded with many of our most advanced features like triple Shake Reduction and ultra-high resolution, the sleek, stylish Optio A40 is for those who are big on both form and function.

FEATURES

- 12.0 megapixel CCD with PENTAX 3X optical zoom
- Triple Shake Reduction technology includes SR, Digital SR and Movie SR
- Face Recognition Auto Focus and Auto Exposure assure properly exposed portraits, up to 15 faces
- Dynamic Range Adjustment properly exposes highlights and shadow areas to show more detail
- 2.5 inch LCD monitor, with Bright mode and wide field of view, makes sharing images easy
- High-quality movie captures MPEG-4 DivX® (640 x 480) at 30 fps with anti-shake and editing functions
- Wide range of automatic and manual exposure modes includes manual exposure and Shutter-Priority modes
- Intelligent zoom function enhances the digital zoom
- Ultra-compact and lightweight design



Advanced Shake Reduction.

Three types of Shake Reduction, including digital, mechanical and movie, help deliver sharp, blur-free shots where camera shake may be an issue, such as action photography or while shooting in low-light conditions such as at dawn, dusk or night.

The whole world, in your hand.

Don't let its size fool you. It may be compact, but it still packs a punch. The Optio S12 is the perfect go-anywhere, do-anything overachiever for anyone who likes to travel light, but still come back with the goods.

FEATURES

- 12.0 megapixel CCD with PENTAX 3X optical zoom
- Dynamic Range Adjustment and Face Recognition features are ideal for portraits
- Face Recognition can be activated and faces selected in any mode with dedicated button, up to 15 faces
- Digital Shake Reduction automatically selects higher ISO, up to 3200, for blur-free images
- Auto Picture mode selects the best possible capture mode for the scene, assuring the highest-quality images
- 2.5 inch LCD monitor with both an anti-reflective coating and Bright mode allows for easy photo composition and review of images
- High-quality extended movie mode captures MPEG-4 DivX® (640 x 480) at 30 fps. It also features anti-shake and in-camera editing functions



(Shown Actual Size)

**Big resolution. Compact size.**

At only 4.6 ounces, the Optio S12 may be light in weight, but with 12.0 megapixel resolution, it's no lightweight.

Available in Black and Silver



Optio V20

BE CURIOUS.

Take a wider view of life.

The ultra-slim, compact, large-screen Optio V20 is loaded with innovative features that help users optimize portrait photographs.

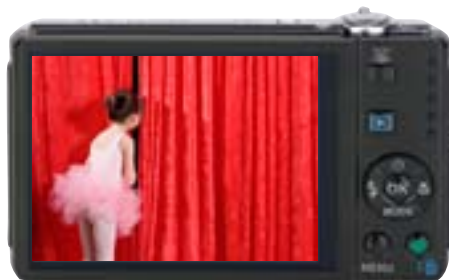
FEATURES

- 8.0 megapixel CCD
- PENTAX 5X optical zoom contained in a compact, lightweight body
- Large 3.0 inch, wide-view (approx. 170 degrees) LCD makes capturing and reviewing images easy
- Evolved Face Recognition includes Smile Capture mode to automatically capture up to 15 smiling faces
- Digital Shake Reduction automatically selects higher ISO, up to 6400, for blur-free images
- Panorama mode automatically stitches a series of three images into one wide scene



3.0 inch LCD Screen.

Housed in its compact body, the large LCD monitor makes for easy image capturing and viewing.



Optio M50

BE IN THE ACTION.

Innovative. Affordable. Conveniently in one package.

An all-around performer, the easy-to-use, affordable Optio M50 is a great choice for those who want the most out of their compact digital camera.

FEATURES

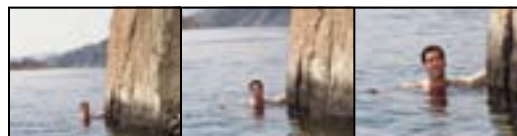
- 8.0 megapixel CCD
- PENTAX 5X optical zoom contained in a compact, lightweight body
- Evolved Face Recognition includes Smile Capture mode to automatically capture up to 15 smiling faces
- Digital Shake Reduction automatically selects light ISO, up to 6400, for blur-free images
- 2.5 inch, wide-view (approx. 170 degrees) LCD makes capturing and reviewing images easy
- Panorama mode automatically stitches a series of three images into one wide scene



Available in Pink and Blue

5X Optical Zoom.

The M50's powerful zoom lens lets you get close to the action, while still retaining its sleek dimensions.



Optio E60

BE FLEXIBLE.

The ultimate travel companion.

An inexpensive, on-the-go performer, the Optio E60 is user-friendly to the extreme, but without sacrificing high-end image quality and innovative features.

FEATURES

- 10.1 megapixel CCD
- PENTAX 3X optical wide zoom lens
- 2.4 inch color LCD monitor to easily frame and review your images and video
- Compatible with easy-to-find AA batteries for convenient travel to any destination
- Auto Picture mode automatically selects from 7 shooting modes for the best picture in any situation
- Advanced Face Recognition sees up to 10 faces for perfectly exposed and focused portraits
- Digital Shake Reduction mode automatically selects a high ISO setting up to 6400 to prevent subject blur
- Movie Shake Reduction stabilizes video recording
- Digital Panorama mode automatically stitches a series of pictures into one wide image



AA-battery operated.

The Optio E60's reliance on easy-to-find AA batteries means you'll never be left unprepared.



PENTAX Optio

DIGITAL CAMERA COLLECTION OVERVIEW

		Optio W60	Optio A40	Optio S12	Optio V20	Optio M50	Optio E60
SENSOR	Effective pixels	10.0M	12.0M	12.0M	8.0M	8.0M	10.1M
	Recorded resolutions (still)	10M, 7.5M, 7M, 5M, 3M, 1024, VGA	12M, 10M, 7M, 5M, 3M, 1024, VGA	12M, 10M, 7M, 5M, 3M, 1024, VGA	8M, 5M, 4M, 3M, 2M, 1024, VGA	8M, 5M, 4M, 3M, 2M, 1024, VGA	10M, 7M, 5M, 3M, 2.1M, 1024, VGA
	Recorded resolutions (movie)	720p15, VGA, QVGA	VGA, QVGA	VGA, QVGA	VGA, QVGA	VGA, QVGA	VGA, QVGA
	Quality levels	Best, Better, Good	Best, Better, Good	Best, Better, Good	Best, Better, Good	Best, Better, Good	Best, Better, Good
LENS	Optical zoom	5X	3X	3X	5X	5X	3X
	Focal length (equiv.)	28–140mm	37–111mm	37–111mm	36–180mm	36–180mm	32–96mm
	Digital zoom	5.7X	6X	6X	5.1X	5.1X	5.7X
	Combined zoom	28.5X	17.9X	18X	25.5X	25.5X	17.1X
LCD/VIEWFINDER	Aperture	f/3.5–5.5	f/2.8–5.4	f/2.8–5.4	f/3.5–5.6	f/3.5–5.6	f/2.9–5.2
	LCD size	2.5"	2.5"	2.5"	3.0"	2.5"	2.4"
	LCD resolution (dots)	230,000	232,000	232,000	230,000	230,000	112,000
Wide angle viewable		170°	160°	170°	170°	170°	n/a
FOCUS SYSTEM	Type	9 point TTL	5 point TTL	5 point TTL	9 point TTL	9 point TTL	3 point TTL
	Focus modes	9 Point, Spot, Auto Tracking, Macro, Super Macro, Infinity, Pan, Manual	5 Point, Spot, Auto Tracking, Macro, Super Macro, Infinity, Pan, Manual	5 Point, Spot, Auto Tracking, Macro, Super Macro, Infinity, Pan, Manual	9 Point, Spot, Auto Tracking, Macro, Infinity, Pan, Manual	9 Point, Spot, Auto Tracking, Macro, Infinity, Pan, Manual	3 Point, Spot, Auto Tracking, Macro, Infinity, Pan, Manual
	Normal Focus Range	1.64' to infinity (over entire zoom range)	1.15' to infinity	1.15' to infinity	1.31' to infinity (wide), 2.95' to infinity (tele)	1.31' to infinity (wide), 2.95' to infinity (tele)	1.64' to infinity (over entire zoom range)
	Macro Focus Range	0.33–1.97' (over entire zoom range)	0.39–1.31'	0.39–1.31' (wide)	0.33–1.64' (wide), 1.97–3.30' (tele)	0.33–1.64' (wide), 1.97–3.30' (tele)	0.33–1.97' (at wide)
	Super Macro Range	0.03–0.98' (at mid-zoom, set automatically)	0.20–0.49'	0.20–0.49' (wide)	n/a	n/a	n/a
FLASH	Flash modes	Auto, flash on, flash off, redeye, soft	Auto, flash on, flash off, redeye, soft	Auto, flash on, flash off, redeye, soft	Auto, flash on, flash off, redeye, soft	Auto, flash on, flash off, redeye, soft	Auto, flash on, flash off, redeye
	Effective range	13' (wide, auto ISO), 8.2' (tele, auto ISO)	23' (wide, auto ISO), 11' (tele, auto ISO)	22' (wide, auto ISO), 11' (tele, auto ISO)	14' (wide, auto ISO), 9.2' (tele, auto ISO)	14' (wide, auto ISO), 9.2' (tele, auto ISO)	20' (wide, auto ISO), 10' (tele, auto ISO)
STORAGE MEDIA	Internal memory	36.4 MB	21 MB	21 MB	51.1 MB	51.1 MB	6.3 MB
	Removable memory	SD, SDHC	SD, SDHC	SD, SDHC	SD, SDHC	SD, SDHC	SD, SDHC
INTERFACES	Ports	USB 2.0 hi-speed, AV out (NTSC, PAL), AC adapter available (optional)			USB 2.0 hi-speed, AV out (NTSC, PAL), AC adapter available (optional)		
POWER SUPPLY	Power source	Li-Ion (D-LI78)	Li-Ion (D-LI8)	Li-Ion (D-LI68)	Li-Ion (D-LI78)	Li-Ion (D-LI78)	2 AA batteries (lithium, alkaline, nickel, NiMH rechargeable)
	Recordable images	205	180	270	200	210	620 (lithium)
	Playback time	200 min	200 min	270 min	210 min	240 min	750 min (lithium)
	Movie recording time	75 min	70 min	90 min	70 min	70 min	270 min (lithium)
	Audio recording time	240 min	180 min	320 min	300 min	300 min	530 min (alkaline)
PHYSICAL SPECIFICATIONS	Dimensions (W x H x D)	3.9 x 2.2 x 1.0"	3.6 x 2.2 x 0.9"	3.4 x 2.1 x 0.8"	3.8 x 2.2 x 0.9"	3.7 x 2.2 x 0.9"	3.9 x 2.3 x 0.98"
	Weight (loaded)	5.1 oz	5.3 oz	4.6 oz	5.1 oz	4.6 oz	6.2 oz
	Operating temperature	14–104° F	32–104° F	32–104° F	32–104° F	32–104° F	32–104° F
TIMING	Startup	1.9 sec	1.8 sec	2.1 sec	1.9 sec	2.0 sec	2.6 sec
	Release lag	0.03 sec	0.01 sec	0.006 sec	0.003 sec	0.003 sec	0.14 sec
LANGUAGE SUPPORT		English, French, German, Spanish, Portuguese, Italian, Dutch, Japanese, Danish, Swedish, Finnish, Polish, Czech, Hungarian, Turkish, Greek (W60, E60 models only), Russian, Thai, Korean, Traditional/Simplified Chinese			English, French, German, Spanish, Portuguese, Italian, Dutch, Japanese, Danish, Swedish, Finnish, Polish, Czech, Hungarian, Turkish, Greek (W60, E60 models only), Russian, Thai, Korean, Traditional/Simplified Chinese		
IMAGE STABILIZATION	Still	Digital SR	Sensor SR, Digital SR	Digital SR	Digital SR	Digital SR	Digital SR
	Movie	Movie SR	Movie SR	Movie SR	Movie SR	Movie SR	Movie SR
TTL METERING SYSTEM	Multi-segment	YES	YES	YES	YES	YES	YES
	Center weighted	YES	YES	YES	YES	YES	n/a
	Spot	YES	YES	YES	YES	YES	n/a
	Exposure compensation	+/- 2 EV (1/3 steps)	+/- 2 EV (1/3 steps)	+/- 2 EV (1/3 steps)	+/- 2 EV (1/3 steps)	+/- 2 EV (1/3 steps)	+/- 2 EV (1/3 steps)
ISO SENSITIVITY	Auto	50–1600, auto range adjustable, 50–6400 in Digital SR mode (5M)	50–800 (3200 in Digital SR, 5MP), auto range selectable	64–3200 (3200 in Digital SR mode), auto range adjustable	80–6400 (6400 only available in Digital SR mode)	64–6400 (ISO 6400 only available in Digital SR mode, ISO 3200 and 6400 fixed at 5M)	100–6400 (Digital SR fixed at 5M)
	Manual	50–6400, ISO 3200–6400 fixed at 5M	50, 100, 200, 400, 800, 1600 (3200 in Digital SR, 5MP)	64–3200 (3200 in Digital SR mode)	80–6400 (6400 only available in Digital SR mode)	64–6400 (ISO 6400 only available in Digital SR mode, ISO 3200 and 6400 fixed at 5M)	100–6400 (3200–6400 ISO fixed at 5M)
WHITE BALANCE	Modes	Auto, Daylight, Shade, Tungsten, Fluorescent, Manual			Auto, Daylight, Shade, Tungsten, Fluorescent, Manual		

PENTAX®

PENTAX Imaging Company
600 12th Street, Ste 300
Golden, Colorado 80401
USA 1-800-877-0155

Visit us at:

pentaximaging.com
pentaxphotogallery.com
pentaxoptiom50.com



PENTAX, Optio and smc PENTAX are trademarks of HOYA CORPORATION. ©2008 ACD Systems Ltd. All rights reserved. ACDSee and the ACDSee logo are trademarks of ACD Systems Ltd. in Canada, the U.S., Europe, Japan and other countries. Microsoft and Windows are registered trademarks of Microsoft Corporation in the United States and other countries. Windows Vista is either a registered trademark or trademark of Microsoft Corporation in the United States and/or other countries. SDHC logo is a trademark. This product supports PRINT Image Matching III. PRINT Image Matching-enabled digital still cameras, printers and software help photographers to produce images more faithful to their intentions. Some functions are not available on printers that are not PRINT Image Matching III-compliant. Red Eye software ©2003-2006 FotoNation Inc. FaceTracker software ©2005-2006 FotoNation Inc. In Camera Red Eye covered by U.S. Patent No. 6,407,777 and 7,042,505. Other patents pending. Mac OS and Macintosh are registered trademarks of Apple Inc. All other brands or product names are trademarks or registered trademarks of their respective companies. Designs and specifications are subject to change without notice. LDC images are simulated. It is strongly recommended that you read the entire operation manual before operating these digital cameras.

©2008 PENTAX Imaging Company L1589